

| FILTER | | Map | Browse |
|--|------|---|--------|
| Fossil fuels | 2019 | Zonguldak Eren Termik Santrali 1 – 2 | |
| Fossil fuels | 2019 | Zonguldak Eren Termik Santrali 3 | |
| Fossil fuels | 2019 | Yunus Emre Kömürlü Termik Santrali | |
| Fossil fuels | 2019 | Yeşilovacık Kömürlü Termik Santrali | |
| Fossil fuels | 2019 | Yeniçatalağzı Eren Kömürlü Termik Santrali | |
| Fossil fuels | 2019 | Yenice Çırpılar Kömürlü Termik Santrali | |
| Fossil fuels | 2019 | Uluköy Kömürlü Termik Santrali | |
| Fossil fuels | 2019 | Konya Karapınar Kömürlü Termik Santrali | |
| Ores and building materials extraction | 2019 | Konaklı Taş Ocağı | |
| Biodiversity | 2019 | Kocaçay Deltası | |
| Fossil fuels | 2019 | Kireçlik Kömürlü Termik Santrali | |
| Fossil fuels | 2019 | Kirazlıdere Kömürlü Termik Santrali | |
| Ores and building materials extraction | 2019 | Kışladağ Altın Madeni | |
| Fossil fuels | 2019 | Kemerköy Kömürlü Termik Santrali | |
| Biomass and Land | 2019 | Kaz Dağları Zeytin Ağaçları Katliamı | |
| Fossil fuels | 2019 | Karapınar Konya Şeker Kömürlü Termik Santrali | |
| Infrastructure and Build | 2019 | Karadeniz Sahil Yolu Projesi | |
| Fossil fuels | 2019 | ... | |

STATUS

Archived

ASPECTS

economy, ecology, space

TEAM

Erdem Şentürk

YEAR

2019-20

ABSTRACT

In Eastern Turkey, currently and over the course of the 20th century, more and more mining and the extraction of minerals have had dramatic effects on land usage, ownership and traditional livelihood in the region. Few corporations monopolise land and natural resources, farmers are displaced, local networks of family, social and economic traditions and practices suffer irritation and erosion. Chemicals used in the process of big-scale mining form a threat to agriculture and healthy fresh water supply. Local networks organise resistance and practices to face the problems related to industrial mining, yet most of their activities are relatively connected to specific locations and not being transferred to the affected region.

LINKS

- Projekt Website (<https://map.birtakimseyler.com/>)

- Cevre Atlası (<https://cevreatlasi.org/>)
- Website Screencast (<https://vimeo.com/511707096>)
- Git Hub Repository of the project (<https://github.com/Birtakimseyler/ecomap>)

FILES

| Filter | Type | Name |
|--|------|--|
| Infrastructure and Build | 2018 | Kızılçak Altın Madenleri |
| Infrastructure and Build | 2018 | Konya Karapınar Kömürlü Termik Santrali |
| Open and building materials extraction | 2018 | Kızılcaşayır Taş Ocağı |
| Infrastructure and Build | 2018 | Kocacay Demiri |
| Infrastructure and Build | 2018 | Kırcaali Kömürlü Termik Santrali |
| Infrastructure and Build | 2018 | Kırcaali Kömürlü Termik Santrali |
| Open and building materials extraction | 2018 | Kızılcaşayır Altın Madeni |
| Infrastructure and Build | 2018 | Kömürköy Kömürlü Termik Santrali |
| Storage and Land | 2018 | Kaz Dağları Zeytin Ağaçları Korunması |
| Infrastructure and Build | 2018 | Karapınar Konya Şeker Kömürlü Termik Santrali |
| Infrastructure and Build | 2018 | Karapınar Sahil Yolu Projesi |
| Infrastructure and Build | 2018 | Karaburun RES |
| Open and building materials extraction | 2018 | Karapınar Kıyılı Demir Madeni Ocağı |
| Infrastructure and Build | 2018 | Kızılcasulmuş Çiftlik ve Turizmli Akş. Vakıfına Yatırım |
| Infrastructure and Build | 2018 | İzmit İmaretpaşa Stadyumunun Yüksek Yarına AVM ve Rezidans Yapılması |
| Infrastructure and Build | 2018 | İzmit Expo 2020 |
| Water Management | 2018 | İzmit Expo 2020 |

| Filter | Type | Name |
|--------------------------|------|--|
| Infrastructure and Build | 2018 | Zonguldak Eren Termik Santrali 1 - 2 |
| Infrastructure and Build | 2018 | Zonguldak Eren Termik Santrali 3 |
| Infrastructure and Build | 2018 | Yarhis Enerji Kömürlü Termik Santrali |
| Infrastructure and Build | 2018 | Yedigöller Kömürlü Termik Santrali |
| Infrastructure and Build | 2018 | Yeniçiftlik Eren Kömürlü Termik Santrali |
| Infrastructure and Build | 2018 | Yeniçiftlik Kömürlü Termik Santrali |
| Infrastructure and Build | 2018 | Uşak Kömürlü Termik Santrali |
| Infrastructure and Build | 2018 | Taşyay Kömürlü Termik Santrali |
| Infrastructure and Build | 2018 | Şevketiye Lapaceki Kömürlü Termik Santrali |
| Infrastructure and Build | 2018 | Şarkık Kömbine Termik Santrali |
| Infrastructure and Build | 2018 | Şarkık Doğalgaz Çevrim Santrali |
| Infrastructure and Build | 2018 | Selma Kömürlü Termik Santrali |
| Infrastructure and Build | 2018 | Sarıkoğalak Termik Santrali |
| Infrastructure and Build | 2018 | Sarıkoğalak Termik Santrali |
| Infrastructure and Build | 2018 | Orhanlı Kömürlü Termik Santrali |
| Infrastructure and Build | 2018 | Mersin Eren Kömürlü Termik Santrali |

Finike marble and stone quarries

2018 - Open and building materials extraction

2 February 2018 - YODAK

A major case on 10th May 2017 made headlines in Turkey. It took place in a village of the Mediterranean city of Antalya. Ayşin and Ali Büyükmurugza, a couple, were cruelly shot dead in their countryside house. They were highly involved in justice, and very well-known for their environmental and consumer rights activism. Büyükmurugza was best known for his activism and lawsuits against stone quarries in Finike and the rest of Antalya, in addition to being the chairman of a lawyers' rights association and a consumer rights workshop within the Antalya City Council. With the help of locals and environmentalists, the Büyükmurugzas had been fighting against local stone quarries in Finike's Akadibi, Dalgaçaya, Kızlık and Akaba villages, which are located among centuries-old cedar and pine forests. In return, the couple experienced constant harassment on-road to their activism, according to their friends' accounts (1). For the past 8 years, they were leading both a civil struggle and a lawsuit against destructive stone and marble quarries in Finike, a small agricultural district. The adverse environmental effects of open pit mining and particularly those in Antalya to the agricultural fields hit the headlines now and then. Over the course of the campaign, the couple managed to shut down the operations of a marble quarry owned by a company called "Barış Memar".

Case: Coal Mine and Geyre Mine

Case Stories About

ACTORS

Pro: Can

- Çengiz İnşaat Company - Turkey
- TEMA Non-government - Turkey
- Karadeniz İşyerleri Non-government - Turkey

IMPACTS

Visible: Potential

- Deforestation and loss of vegetation cover - Environmental
- Loss of landscape / aesthetic degradation - Environmental
- Loss of landscape / aesthetic degradation - Environmental
- Groundwater pollution or depletion - Environmental
- Other environmental impacts - Environmental
- Accidents - Health
- Loss of traditional knowledge/practices - Cultural - Loss
- Land dispossession - Social

COMMODITY

Kızılcaşayır Gold Mine

2018 - Open and building materials extraction

Kızılcaşayır Gold Mine is the largest gold-mining operation in Turkey. A total of 10 million tons per year is expected to be extracted with an expected 18 years of mine life. The mine will produce 240 COC ounces of gold per year at full production capacity. Kızılcaşayır is located within the boundaries of the province of Iğdır, 300 kilometers to the west and Ankara 580 km north-west. Iğdır city center is the closest to the project site, being at 35 km north-east. The projects started in 1999 on both local and national level. However, despite the protest by EÜD, the mine started to pass a contract in 2005, and in 2008 the mine began to be operational. Source: Elites

ACTORS

IMPACTS

Visible: Potential

- Deforestation and loss of vegetation cover - Environmental
- Loss of landscape / aesthetic degradation - Environmental
- Groundwater pollution or depletion - Environmental
- Land dispossession - Social
- Loss of landscape / aesthetic degradation - Environmental
- Accidents - Health
- Groundwater pollution or depletion - Environmental
- Land dispossession - Social
- Loss of landscape / aesthetic degradation - Environmental

44 related cases

TYPE

- Infrastructure (5)
- Storage and Land (5)
- Fossil Fuels (45)
- Infrastructure and Build (2)
- Infrastructure and Build (2)
- Storage (2)
- Chemical waste (2)
- Other (1)
- Infrastructure (1)
- Storage Management (2)
- Water Management (2)

ACTOR

COMMODITY

IMPACT

Cost of Gold

2018 - 2018

Gold is an element that has profoundly influenced the physical and sociological structure of the world through history due to its distinct value, although there is no benefit that should be contained. Today most of the gold is used as jewelry. Or rather not used. Most of the extracted gold is stored in boxes as bars. It is constantly changing in shape and in its constant physical or virtual circulation. Perhaps your gold watch includes a Roman coin that was in circulation 2,000 years ago. This is a financial asset that can be visualized by doing some transactions on the stock exchange.

The Toxic Valley

List of the Poisons - Interview with Bülent Şik

Conflict Diamonds

Rubber Barons

Data Platform for the Environmental Activism

Mapping the Environmental Conflicts and Relational Visualization of the Responsible Actions, Impacts and Commodities

The Project

Blue Marble is a web-based participatory map platform that documents, archives and visualizes conflicts on environmental issues and fully stories of affected communities or regions.

Climate, mining, incineration plants, deforestation, fracking, water pollution caused by industry etc. have serious ecological and social impacts, against which affected communities worldwide try to protect themselves. However, projects with an extensive intervention in the ecosystem often remain hidden, the effects are not made public, or only partially, or the relationships to projects are concealed.

This platform would like to create transparency, inform, make connections visible, connect environmental movements working on related topics and finally tell stories and thus be heard.

The platform aims to be open to creative approaches for visualizing certain aspects beyond known journalistic means such as text and images and last but not least to make stories come alive.

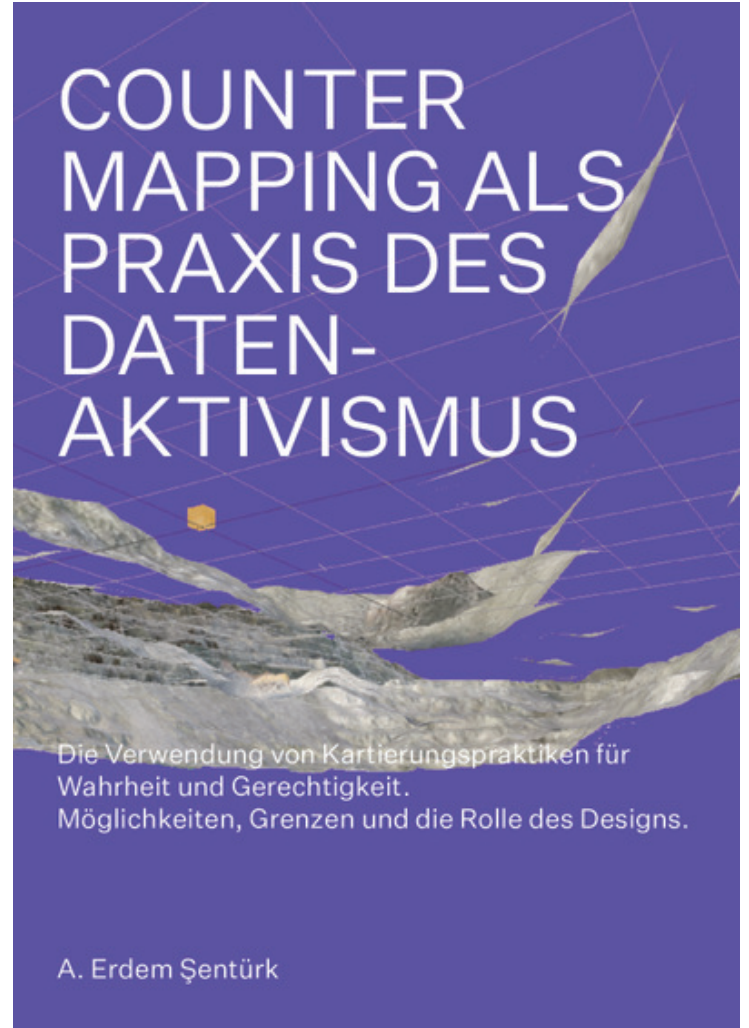
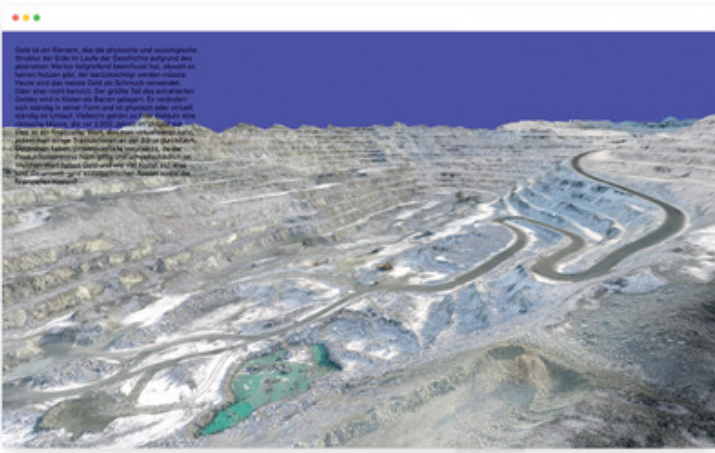
Our main principles the data sovereignty platform is based on are: Transparency, Collaboration, Participation, Verification, Open source, Accessibility, Independence.

For developers

<https://github.com/Birtakimseyler/ecomap>

Technical overview

The platform is a digital application with a technical infrastructure that allows data from participants to be stored and analyzed. The technical requirements of the platform are provided by open source software technologies. It is important for transparency that all platform codes are published as an open source. It also makes it possible for the application to be developed by everyone. It pro-



All rights reserved. If you want to know more about this project or if you are interested in a collaboration, please let us know by sending an email info@truth.design.